



 **FLOWSTONE**  
LUXURY FLOORING SYSTEMS

Multi-Family Living

ORIGINS COLLECTIONS



# THE QUARRY

“Where the earth’s natural beauty meets timeless design, inspired by the majestic stone formations shaped by millions of years of geological processes.”



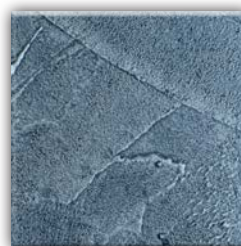
Kanawha Clay



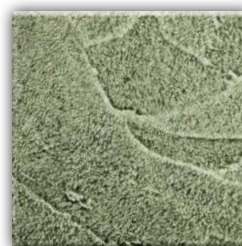
Golden Wheeling



Canaan Cocoa



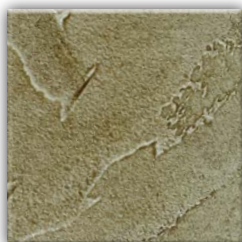
Bluestone Chisel



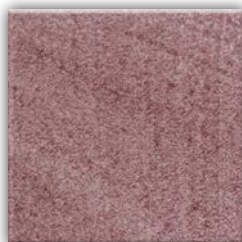
Emerald Hollow



Charleston-Grey



Appalachian Oak



Rhododendron Mist



New River Tide



Midnight Coal



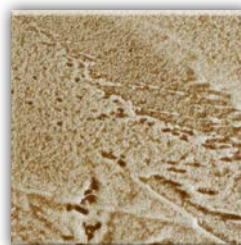
Deep Seam



Shenandoah Glow



Ravenel Pine



Valley Soil

**more  
colors  
available**

## **Designed to Look Natural. Built to Last.**

Crafted for high-performance living, this seamless flooring solution offers a warm, organic look that resonates with today’s tenants. Resistant to staining, cracking, and wear, it supports both comfort and longevity. Its textured surface enhances slip resistance and echoes natural stone aesthetics without the maintenance burden. Ideal for both interior living spaces and amenity areas where visual appeal and resilience are non-negotiable.

# THE PESTLE

“A tribute to the art of color creation, where each solid color is a result of meticulous blending and grinding, reminiscent of the tradition created by artists and craftsmen.”



Eastern Sky



Boulder Dust



Pearl Ground



Slate Mix



Clay Burn



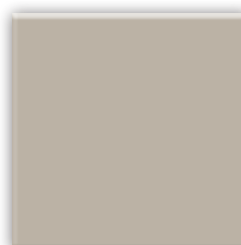
Hazel Mash



Valley Brown



Tawny Blend



Ochre Grain

**more  
colors  
available**

## **Performance Underfoot. Simplicity Above All.**

This seamless flooring system is engineered for durability and ease of care in high-density environments. With a smooth matte finish and consistent coloration, it's a perfect fit for design-forward developments. Its resistance to scratches, spills, and wear ensures that units remain pristine — even in high-turnover communities. The refined surface complements a wide range of architectural palettes while offering long-term value to owners and low maintenance demand for staff.

NOTE: The appearance of the colors on these charts are for reference only. Colors may be affected by the type and quality of the light and the angle from which it is viewed. We strongly recommend creating a job site sample panel before applying.



# THE FORGE

"Crafted from the heart of the forge, where liquid metal transforms into striking colors. These radiant shades, tempered by fire, elevate spaces with bold, everlasting elegance."



Soft-Radiance



Shimmer-Veil



Warm-Patina



Tempest-Veil



Blue-Dusk



Burnished-Dawn



Darkened-Core



Deep-Glaze



Rich-Roast



Cool-Tint



Night-Pulse



Aluminus



Faint-Bloom



Hard-Shine

**more  
colors  
available**

## When Floor Becomes Feature.

This radiant seamless system adds depth and brilliance to any space. With rich visual movement and nuanced highlights, it transforms corridors, lobbies, and units into modern showcases. While delivering luxurious style, the surface remains practical: easy to clean, highly durable, and fully compliant with ADA and fire safety codes. It's a statement of prestige that requires little more than admiration.



[www.flowstoneflooring.com](http://www.flowstoneflooring.com)

**(949) 709-3986**